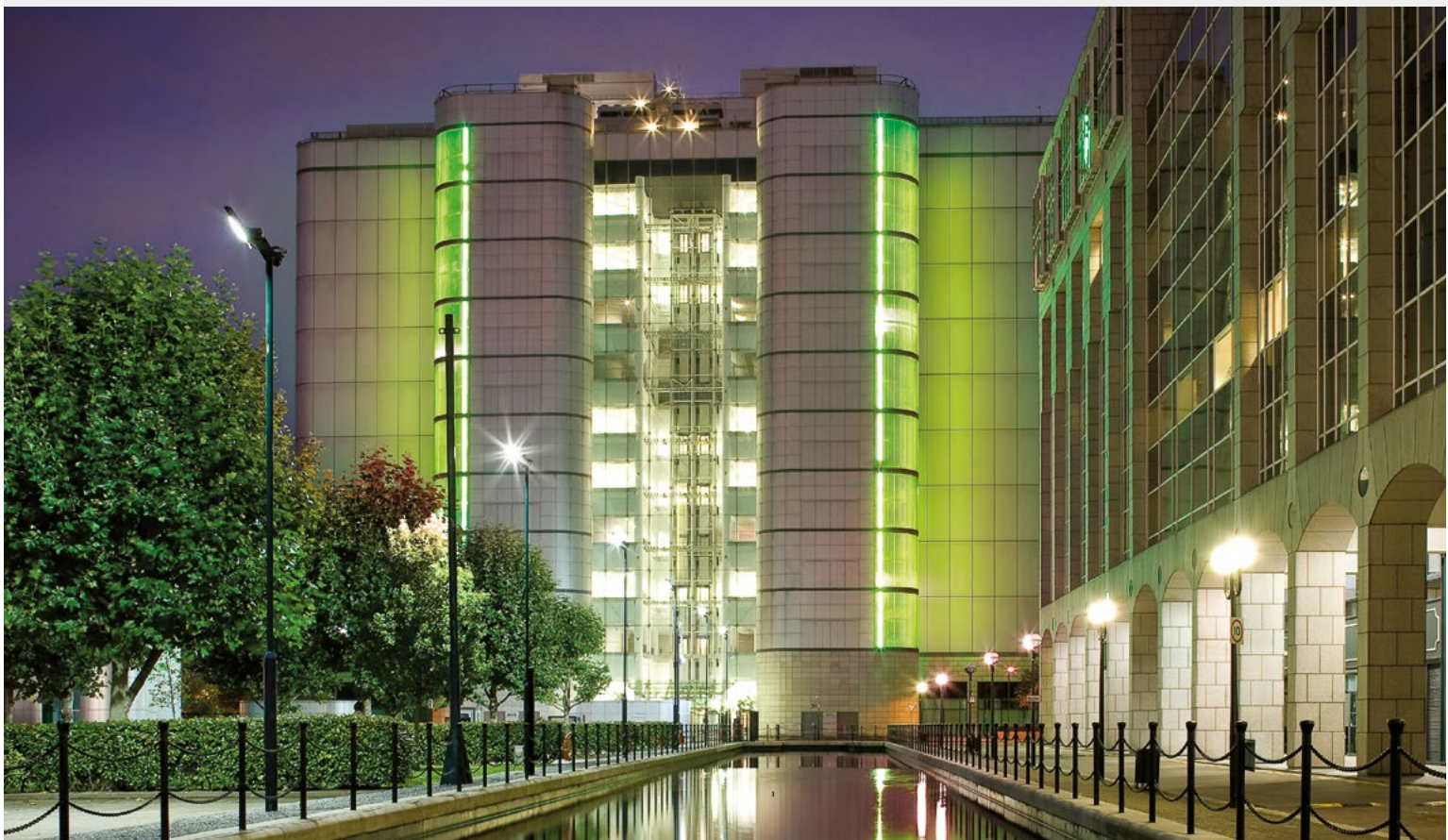


EUROPE'S LARGEST PURPOSE BUILT DATA CENTRE PROVIDING UNRIVALLED RESILIENCE

London East Technical Specification



**UNINTERRUPTED
POWER**



**BESPOKE
SOLUTIONS**



**NETWORK
DENSE**



**CLOUD
CONNECTIVITY**

GLOBAL SWITCH

Global Switch is a leading owner, operator and developer of large scale network dense, carrier and cloud neutral multi-customer data centres in Europe and Asia-Pacific. Our data centres provide rich ecosystems and offer reliability, security and flexibility that our customers require to house their IT infrastructure.

Services	Key benefits	
<p>Private Suites</p> <p>These self-contained areas, which can include 24x7x365 network operating centre facilities, are designed and built to customers bespoke specifications.</p>	<p>Scale: Scalability with over 4,600,000 sq ft (428,000 sq m) across thirteen world-class, fully-fitted data centres.</p>	<p>Bespoke solutions: Solutions can be tailored to individual customer requirements.</p>
<p>Cages</p> <p>The Global Switch cage solution offers the benefits of large-scale resilience for medium sized IT space and power requirements. This solution provides secure private areas for customers and offers flexibility in design and layout.</p>	<p>Flexibility: Access to the full range of space and power solutions with flexibility to meet your needs.</p>	<p>Environmental commitment: Energy efficiency is at the core of our business. Through innovation in design, operation and working closely with our customers, we are continually improving the energy efficiency of our data centres.</p>
<p>Racks</p> <p>Situated in colocation areas, our racks are a vital resource for businesses looking to outsource their critical IT infrastructure, establish a presence in multiple locations or expand their footprint as their space requirements grow.</p>	<p>Network dense: Data centres that are located adjacent to central business districts exclusively in Tier 1 markets offer connectivity rich, low latency solutions with direct access to the major international fibre routes.</p>	<p>Operational excellence: Key ISO certifications complement a robust Critical Environments Programme which is central to applying and maintaining best in class practices across our global data centre portfolio.</p>
<p>Meet Me Rooms</p> <p>Meet Me Rooms offer telecommunications companies highly secure purpose built areas to house their network infrastructure in order to connect with a host of companies and organisations within the data centres.</p>	<p>Competitive options: A strong diverse service provider ecosystem ensures that customers have access to competitive pricing for a complete range of services.</p>	<p>Financial strength: A financially secure owner and operator with investment grade credit ratings.</p>
	<p>Resilient Infrastructure: Global Switch provides uninterrupted power with multiple layers of redundancy, optimised cooling and security. Monitoring of these key components through highly sophisticated building management systems is backed up by 24x7x365 security and technical support teams.</p>	



WORLD-CLASS
DATA CENTRES



OPTIMISED
COOLING



CARRIER
NEUTRAL



HIGHLY
SECURE



ENVIRONMENTAL
COMMITMENT



OPERATIONAL
EXCELLENCE

LONDON EAST



Location

- The data centre is located 0.5 miles from the financial district and 3.5 miles from the city centre
- A local railway station is located within a 5 minute walk
- London City Airport is 3.5 miles away and 3 further airports are within driving distance

Building Overview

- Global Switch owns the freehold
- Purpose built
- Exceeds Tier III operational performance
- 65,542 sq m of gross space
- 11 data floors
- Flexible IT space with ability to create bespoke environments as required

Main Structural Features

- Steel frame with concrete floors, metal faced cladding and glazing
- 5m slab to slab height
- Raised floor height of 600mm
- Minimum from raised floor: 3.6m clear height to underside of deepest beam
- Floor loading of 10kN/m²
- 1 goods lift (7.5 tonnes), 2 passenger lifts

Power

- 132kV utility supply with N+N redundancy
- Utility power supply capacity of 100MVA
- Technical (IT) power and mechanical systems supplied by on-site Diesel Rotary UPS with N+2 redundancy
- Fully diverse power distribution to technical areas
- On-site fuel storage to support 48 hours at full capacity with 24x7x365 fuel delivery
- Offering 2,000 W/m² as standard, with higher power density solutions fully supported

Cooling

- 41.57MW of installed cooling provision
- Minimum N+2 resilience on all systems
- CRAH units control temperature and humidity in technical space within the recommended range of ASHRAE TC9.9
- Diverse distribution pipework throughout
- Chilled water cooling system
- In rack cooling capability if required

Security

- Operations Centre manned 24x7x365
- Security guard patrols 24x7x365
- Continuous CCTV surveillance of external and internal areas
- CCTV records kept for 31 days
- Comprehensive intruder detection and alarms to all areas
- Perimeter Intrusion Detection System (PIDs)
- Strict access control procedures to ISO 27001
- Access control using proximity card readers
- Physical access via mantrap
- Secure managed delivery and loading area available 24x7x365

Connectivity

- Carrier Neutral
- Network dense with access to multiple global and regional carriers and Internet service providers offering Dark Fibre, Wavelength, Ethernet, MPLS, VPLS, IP Transit, Peering, CDN, Storage, Virtualised Services (SDN), Voice and Mobile Services
- Access to multiple cloud services through leading public, private and hybrid cloud solution providers
- 2 dedicated Meet Me Rooms
- 6 diverse building entry points
- Diverse cable routes and pathways
- Campus fibre system interconnecting London East and London North
- Roof space availability for satellite and antennae equipment
- Multiple LINX Fibre/Capacity Partners and remote peering service providers

Fire Detection and Suppression

- Analogue addressable fire detection system in all areas
- Aspirated early warning smoke detection system (monitored 24x7x365)
- Inergen gas suppression system in technical areas

Critical Environments Management

- Experienced 24x7x365 facilities management team
- Environment (thermal conditions) monitored 24x7x365
- All Building Management Systems (BMS) monitored 24x7x365
- Comprehensive energy metering systems
- Internationally recognised critical environments programme

Other Services

- Cross connects
- Customer reports
- Deliveries and storage
- Design and build
- Fit-out
- On-site facilities
- Remote hands
- Technical cleaning and waste disposal

Certifications

- ISO 9001, 14001, 27001, 45001, 50001
- Membership of the United Kingdom Climate Change Agreement (CCA)

Global Switch London East

Global Switch House
3 Nutmeg Lane
London E14 2AX, United Kingdom
+44 20 7473 9000
saleslondon@globalswitch.com

Corporate Office

2nd Floor, Nova North
11 Bressenden Place
London SW1E 5BY
United Kingdom
+44 20 8054 9000
info@globalswitch.com

Data Centres

Amsterdam Campus

Amsterdam West / Amsterdam East
Johan Huizingalaan 759
1066 VH Amsterdam
Netherlands

+31 20 6666 300
salesamsterdam@globalswitch.com

London Campus

London East
Global Switch House
3 Nutmeg Lane
London E14 2AX
United Kingdom

+44 20 7473 9000
saleslondon@globalswitch.com

London North

East India Dock House
240 East India Dock Road
London E14 9YY
United Kingdom

+44 20 7473 9000
saleslondon@globalswitch.com

Frankfurt Campus

Frankfurt North / Frankfurt South
Eschborner Landstraße 110
60489 Frankfurt am Main
Germany

+49 69 74 22 70
salesfrankfurt@globalswitch.com

Madrid

Calle Yécora, 4
28022 Madrid
Spain

+34 91 312 06 00
salesmadrid@globalswitch.com

Paris Campus

Paris East / Paris West
7-9 rue Petit
92582 Clichy Cedex, France

+33 1 55 90 04 60
salesparis@globalswitch.com

Hong Kong

18 Chun Yat Street
Tseung Kwan O Industrial Estate
New Territories, Hong Kong

+852 3955 1000
saleshongkong@globalswitch.com

Singapore

Singapore Tai Seng
2 Tai Seng Avenue
Singapore 534408

Singapore Woodlands
7 Woodlands Height
Singapore 737858

+65 6958 1800
salessingapore@globalswitch.com

Sydney Campus*

Sydney East / Sydney West
400 Harris Street
Ultimo, Sydney
NSW 2007 Australia

+61 2 9566 7000
salesaustralia@globalswitch.com

** Consolidated Group entity*

ALWAYS ON [GLOBALSWITCH.COM](https://globalswitch.com)

The information provided in this brochure is intended to be used for illustrative purposes only and does not constitute part of any offer or offer to contract. Any information herein contained is not warranted as accurate or complete. © Global Switch 2021.